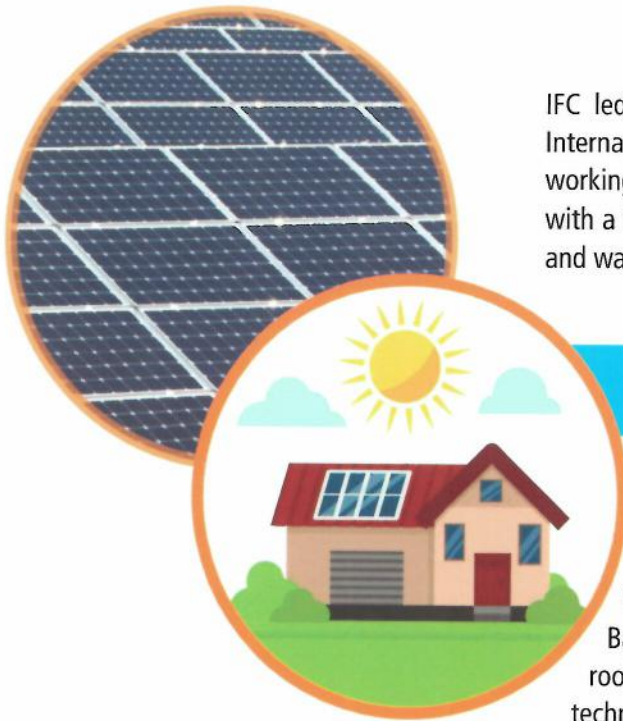


ROOFTOP SOLAR PV

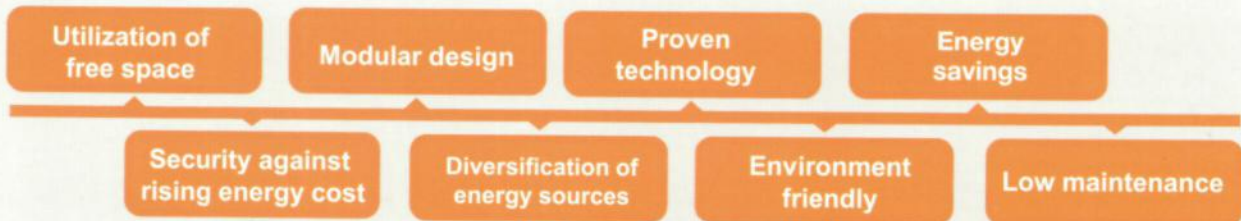


IFC led Advisory Partnership for Cleaner Textile is a joint initiative for International Brands and Apparel Trade Association (BGMEA). PaCT is working towards the implementation of best practices in the textile sector, with a focus on reducing resource consumption (energy, water, chemicals) and wastewater pollution.

Why Rooftop Solar

To increase the reliability of energy supply and improve the environment, the textile industry is looking for alternative and renewable sources of energy. Solar rooftop has immense potential in the energy intensive operations of the textile industries in Bangladesh by utilizing existing vacant and shadow-free factory rooftop space. Solar PV should be installed after conducting a thorough technical and financial feasibility study.

BENEFITS



What PaCT Offers

PaCT will organize technical and financial feasibility studies of rooftop solar PV in textile factories and support the factories in preparing bid documents, finalizing developers, and preparing an implementation plan.



Technical and financial feasibility studies



Standard bid documents for factories



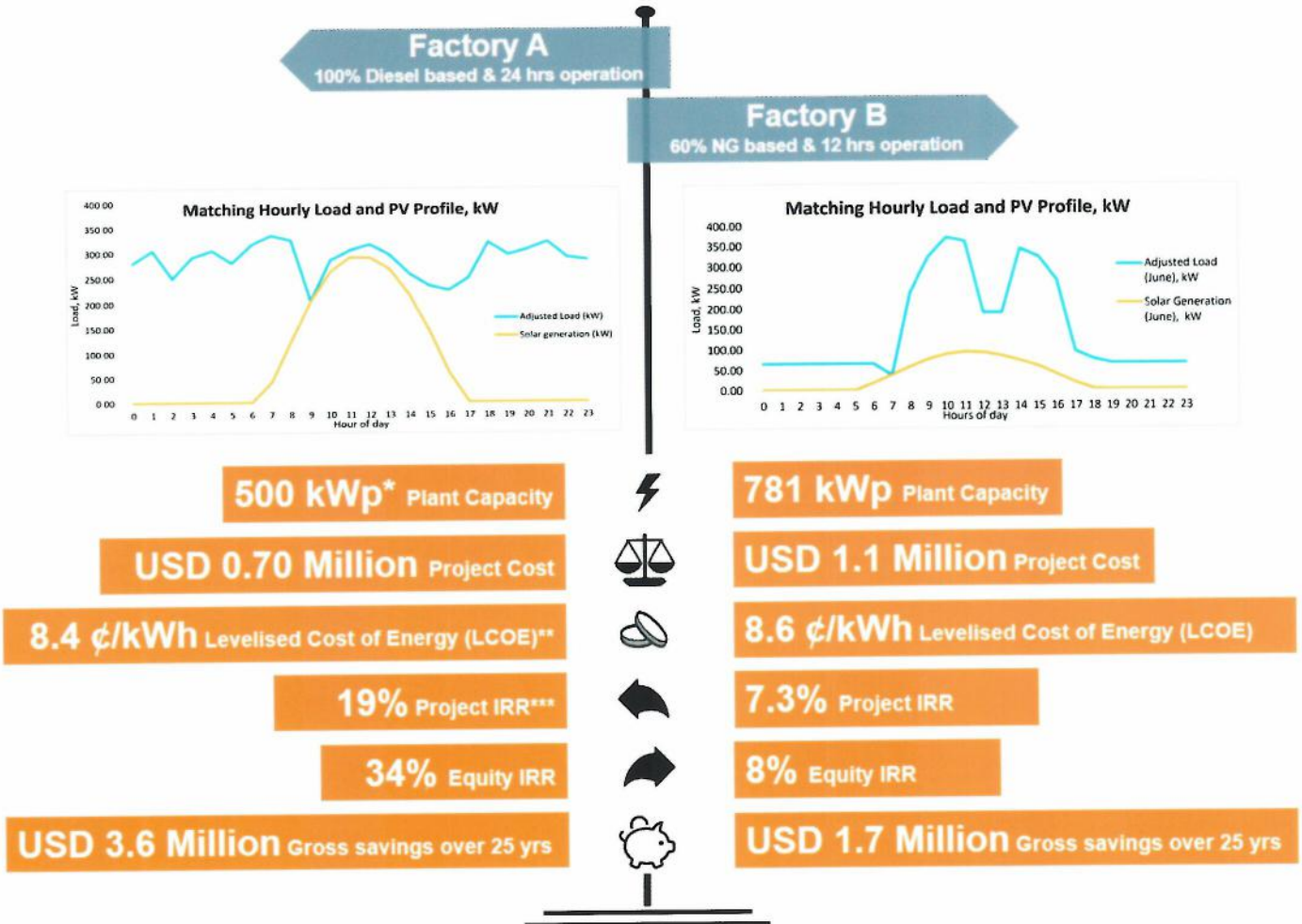
Facilitating developer selection



Facilitating financing

Side-by-side Comparison of the Outcomes of Feasibility Studies on Rooftop Solar PV at PaCT Partner Factories Located near Dhaka

PaCT worked with several partner factories with different energy usage profiles to determine the technical and financial feasibility for optimum level of PV capacity installation at these factories and provide a comprehensive analysis on various aspects of rooftop solar integration with the existing sources of energy. IFC personnel and the consulting firm, appointed by the PaCT program, undertook site visits to the factories and collected data related to the type of rooftop, shadow-free area, load details, electricity consumption pattern during operating hours, supply sources, and other relevant details to analyze the technical and financial feasibilities of a rooftop solar project.



*kWp: Kilo Watt Peak

**Levelized Cost of Energy (LCOE): Total lifecycle cost of producing a kWh of power using rooftop solar PV

***IRR: Internal Rate of Return

CONTACT

Nishat S. Chowdhury
Program Manager
nchowdhury2@ifc.org

United House, 10 Gulshan Avenue, Gulshan 1, Dhaka 1212, Bangladesh
Telephone: +88 0960 4401400
Fax: (880-2)-9894744, 8833495
www.textilepact.net

DEVELOPMENT PARTNERS



IMPLEMENTER



BRAND PARTNERS



IMPLEMENTING PARTNER

